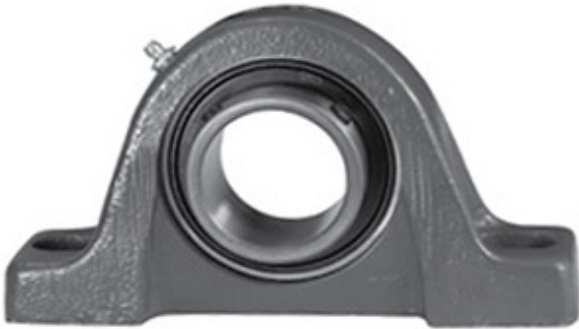




SGL BEARING- EUROPE LTD.

2 Inch | 50.8 Millimeter x 1.813 Inch | 46.05 Millimeter x 2.5 Inch | 63.5 Millimeter LINK BELT P3S232E Pillow Block Bearings



Bearing No. P3S232E

P3S232E Bearing 2D drawings and 3D CAD models

Category	Pillow Block Bearings
Inventory	0.0
Manufacturer Name	REXNORD
Minimum Buy Quantity	N/A
Weight	3.53
EAN	0662864011211
Product Group	M06110
Number of Mounting Holes	2
Mounting Method	Set Screw
Housing Style	2 Bolt Pillow Block
Rolling Element	Ball Bearing
Housing Material	Cast Iron
Expansion / Non-expansion	Non-expansion
Mounting Bolts	5/8 Inch
Relubricatable	Yes
Insert Part Number	MB252L-PA
Seals	Single Lip Contact
Housing Configuration	1 Piece Solid
Inch - Metric	Inch
Other Features	Single Row Standard Duty Has Flinger
Long Description	2 Bolt Pillow Block; 2" Bore; 2-1/2" Base to Center Height; Set Screw Mount; Ball Bearing; 6-5/16" Minimum Bolt Spacing;



SGL BEARING- EUROPE LTD.

	7-1/2" Bolt Spacing Maximum; Relubricatable; Cast Iron; Sin
Category	Pillow Block
UNSPSC	31171511
Harmonized Tariff Code	8483.20.40.40
Noun	Bearing
Keyword String	Pillow Block
Manufacturer URL	http://www.rexnord.com
Manufacturer Item Number	C252L
Manufacturer Internal Number	5804262
Weight / LBS	7.78
Nominal Bolt Center to Center	6.8 Inch 171.5 Millimeter
Bolt Spacing Minimum	6.313 Inch 160.35Millimeter
B	2.5 Inch 63.5 Millimeter
D	1.813 Inch 46.05 Millimeter
Actual Bolt Center to Center	0 Inch 0Millimeter
d	2 Inch 50.8 Millimeter
Bolt Spacing Maximum	7.5 Inch 190.5Millimeter