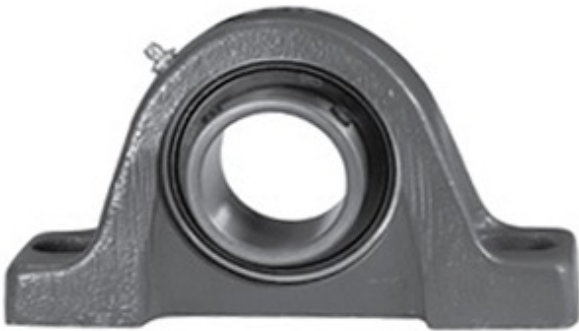




SGL BEARING- EUROPE LTD.

0.688 Inch | 17.475 Millimeter x 0.984 Inch | 25 Millimeter x 1.188 Inch | 30.175 Millimeter LINK BELT P3S211E Pillow Block Bearings



Bearing No. P3S211E

P3S211E Bearing 2D drawings and 3D CAD models

Category	Pillow Block Bearings
Inventory	0.0
Manufacturer Name	REXNORD
Minimum Buy Quantity	N/A
Weight	0.48
EAN	0662864010313
Product Group	M06110
Number of Mounting Holes	2
Mounting Method	Set Screw
Housing Style	2 Bolt Pillow Block
Rolling Element	Ball Bearing
Housing Material	Cast Iron
Expansion / Non-expansion	Non-expansion
Mounting Bolts	3/8 Inch
Relubricatable	Yes
Insert Part Number	MB25-1116-PA
Seals	Single Lip Contact
Housing Configuration	1 Piece Solid
Inch - Metric	Inch
Other Features	Single Row Standard Duty Has Flinger
Long Description	2 Bolt Pillow Block; 11/16" Bore; 1-3/16" Base to Center Height; Set Screw Mount; Ball Bearing; 3-1/8" Minimum Bolt Spacing;



SGL BEARING- EUROPE LTD.

	4-1/8" Bolt Spacing Maximum; Relubricatable; Cast Iron;
Category	Pillow Block
UNSPSC	31171511
Harmonized Tariff Code	8483.20.40.40
Noun	Bearing
Keyword String	Pillow Block
Manufacturer URL	http://www.rexnord.com
Manufacturer Item Number	C25-1116
Manufacturer Internal Number	5804124
Weight / LBS	1.05
Nominal Bolt Center to Center	3.8 Inch 97 Millimeter
Actual Bolt Center to Center	0 Inch 0Millimeter
B	1.188 Inch 30.175 Millimeter
d	0.688 Inch 17.475 Millimeter
D	0.984 Inch 25 Millimeter
Bolt Spacing Minimum	3.125 Inch 79.375Millimeter
Bolt Spacing Maximum	4.125 Inch 104.775Millimeter